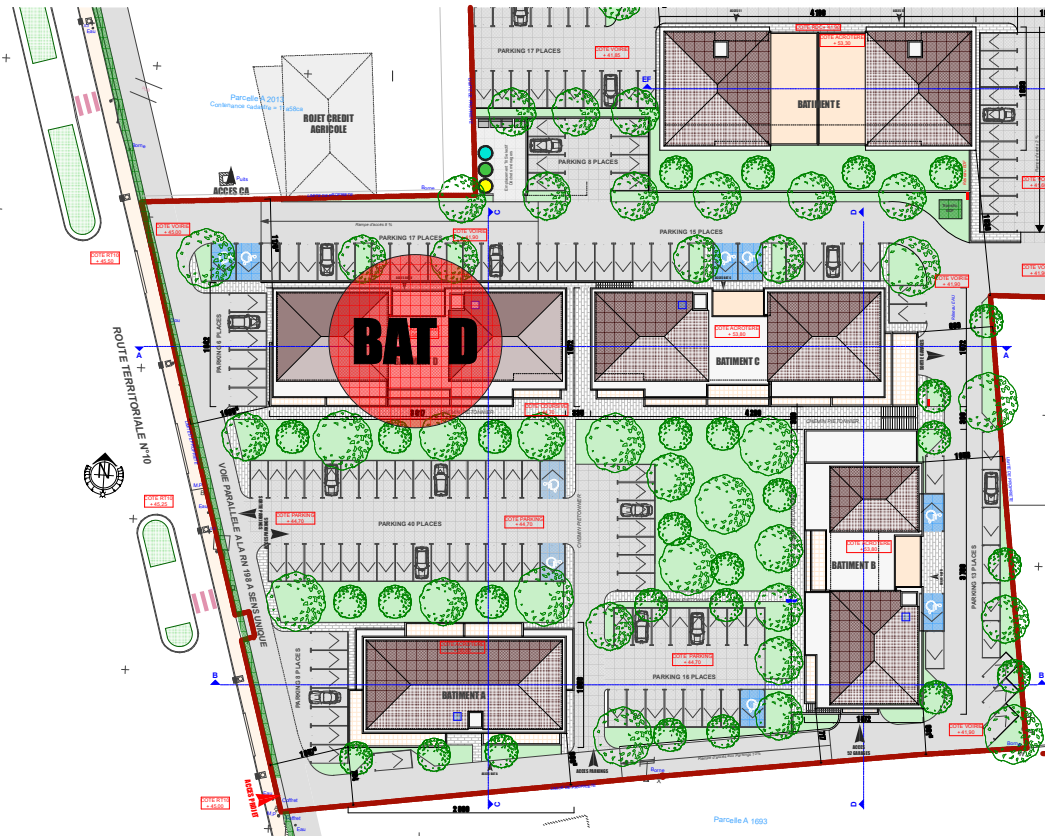


LOT D 105

R+1



Plan de Masse

T3

Hall	10,01 m ²
Cuisine/Séjour	26,94 m ²
WC	1,99 m ²
SdB	6,19 m ²
Chambre 1	10,34 m ²
Chambre 2	12,84 m ²

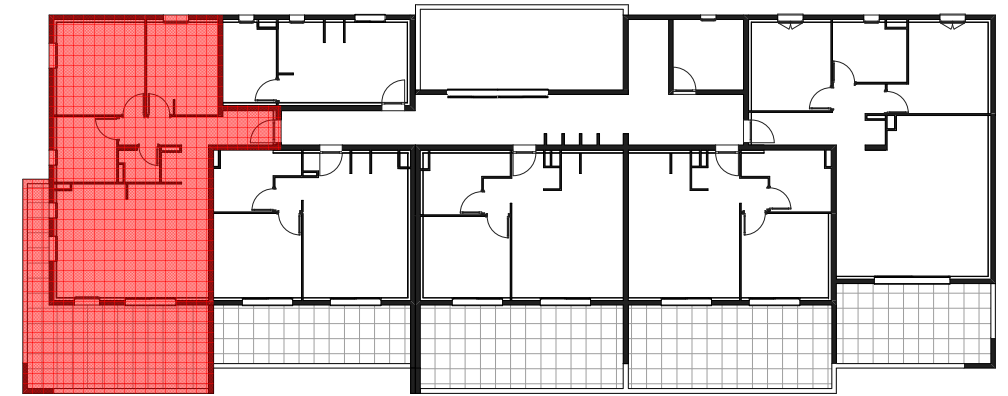
TOTAL surface habitable

68,31 m²

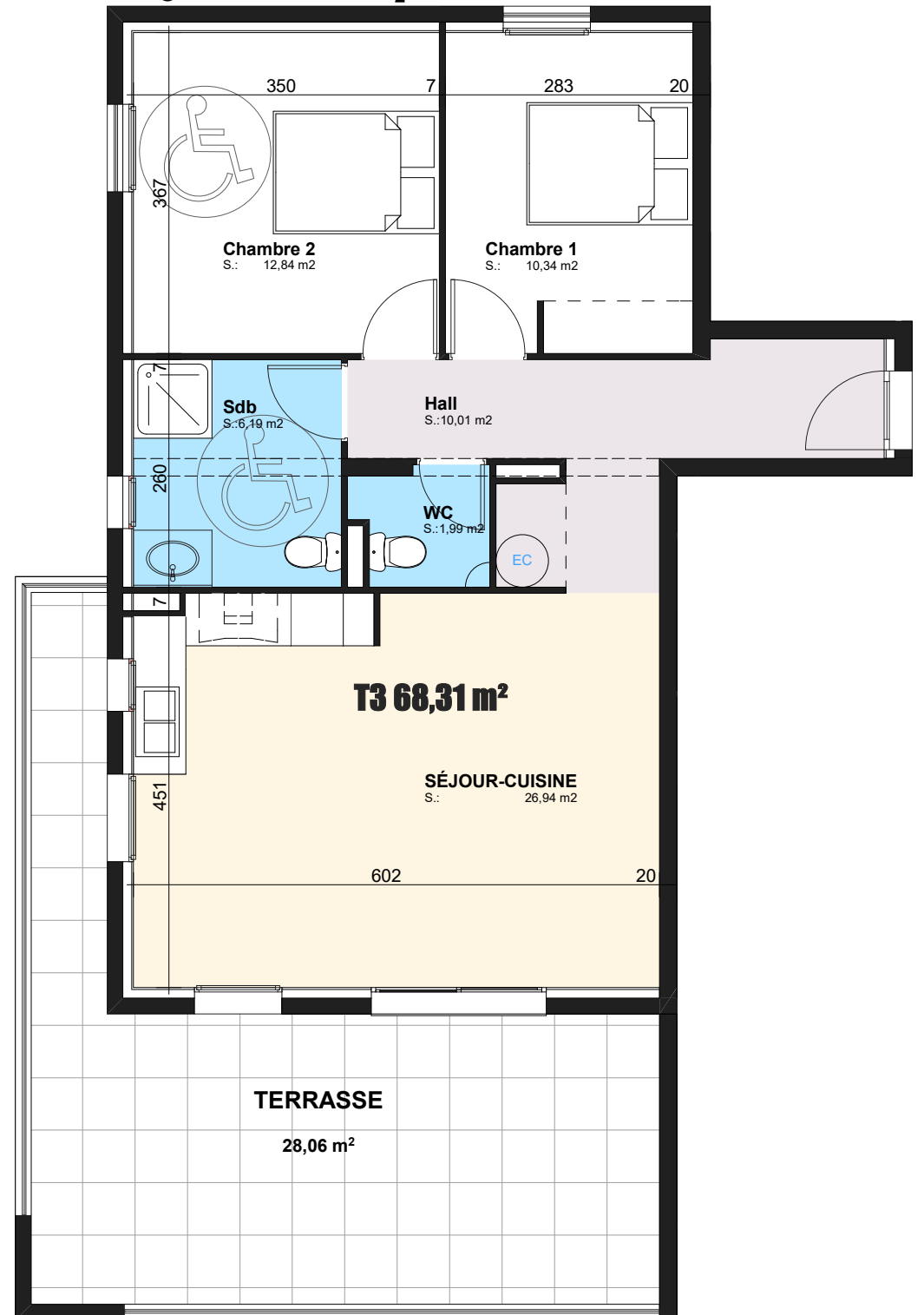
Terrasse

28,06 m²

D 105



Plan d'étage courant R+1



commune de PENTA DI CASINCA

Résidence U Centru